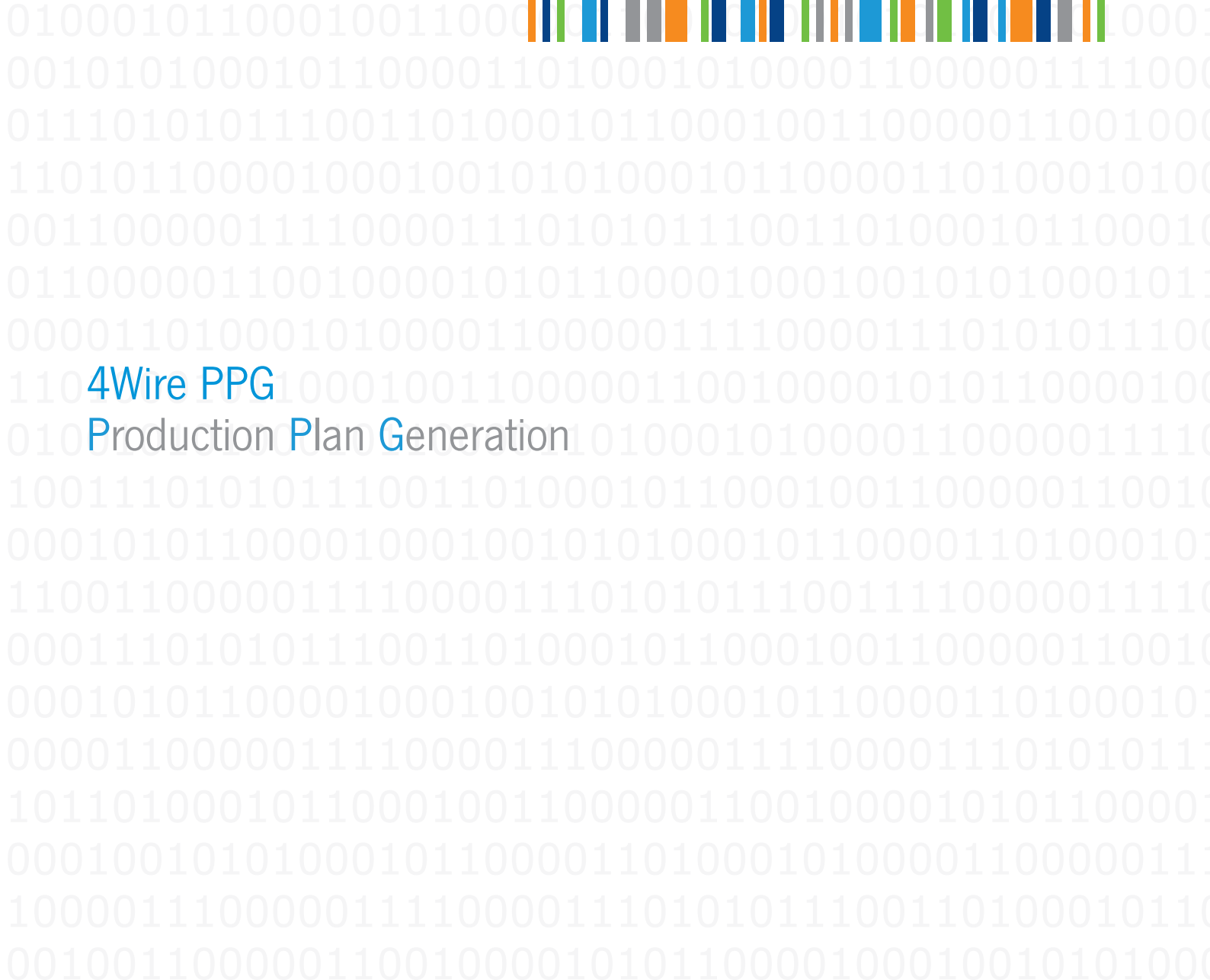


Leading Software Solutions for Wire Harness Production



4Wire PPG

Production Plan Generation

4Wire PPG - Production Plan Generation

A Comprehensive Software Solution for Wire Harness Engineering

4Wire PPG - connection between engineering and production

4Wire PPG is a comprehensive software solution for wire harness engineering to create production documents automatically.

From the engineering drawings, 4Wire PPG generates production modules in rule-based fashion with bill of materials, work plans and operating instructions.

4Wire PPG supports your complete manufacturing chain, from cutting to final assembly, for lot and customer-specific production of wiring harnesses inclusive of JIT/JIS process implementation.

Rule based generation

A powerful set of rules manages the generation of production modules. The existing basic rule set can be adapted flexibly to your production method. Therefore, 4Wire PPG generates optimized production modules related to your production.

Your intellectual property

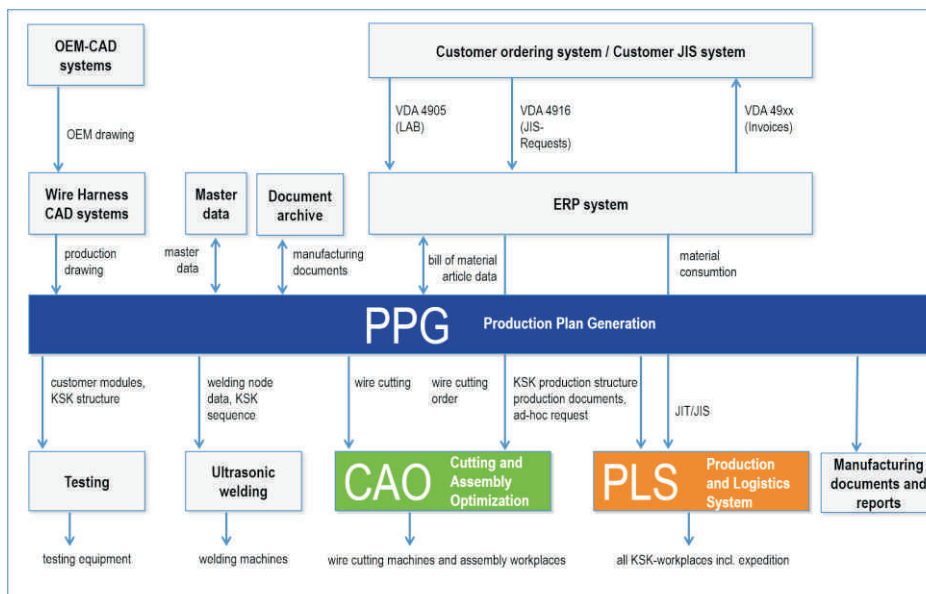
To protect your technical knowledge, the set of rules is capsuled and exclusively delivered to your company.

Multi-client capability

The multi-client and rights management of 4Wire PPG ensures that each production division sees only its own data and each employee is only allowed to execute his approved functions.

Process chain

4Wire PPG integrates in an IT-based process chain (picture 1) process design and MES systems in production and logistics, as well as supporting disposition processes in ERP systems.



Picture 1: process chain for KSK-specific production

Drawings and form boards

As a standard, 4Wire PPG supports VDA KBL formats with customer-specific extensions, as well as various other drawing and OEM system formats.

ERP systems

With various ERP systems (including SAP), ERP has a bidirectional synchronization of all articles - purchased parts, modules and variants - integrating dispositional processes in ERP.

JIT-process for KSK-production

In the JIT-process for KSK-production, 4Wire PPG takes over delivery call offs, tests the buildability of vehicles based on rules, and generates new production documents.

Production modules generation

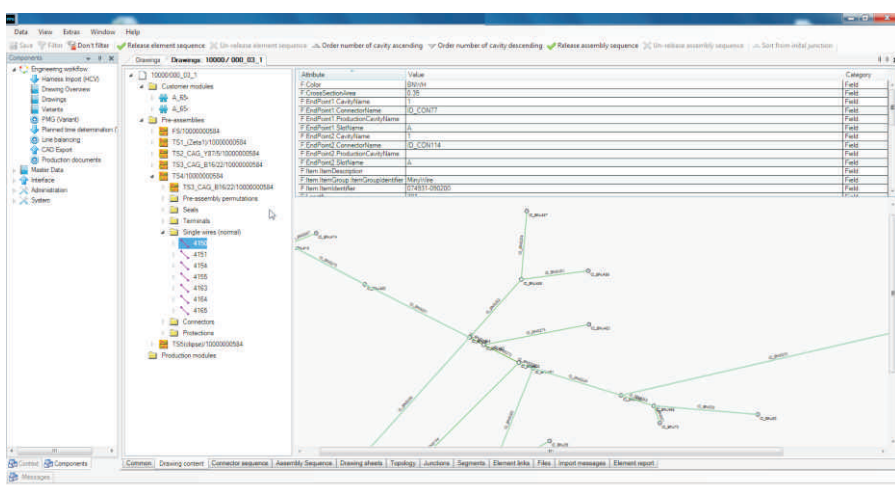
For prototypes, families of vehicles (150%-drawing) and customer-specific vehicles, 4Wire PPG generates rule-based production modules.

Cutting area

4Wire PPG generates and provides cutting data for the cutting area, for instance DiIT's 4Wire CAO, the MES system for Cutting and Assembly Optimization.

Generation of cutting modules (lead sets). Recognition of lead set sequences and complex lead sets.

- Single-, twisted-, multiwire wires
- Double crimp
- Splices
- Wire chains



Picture 2: wire harness, content and topology

4Wire PPG V4 TECHNOLOGY

CLIENTS IN .NETS TECHNOLOGY

- Multi-lingual, easy to use with interactive graphics and drag-and-drop
- Tabbed data views can be rearranged, undocked and placed flexible
- Adjustable window size will be recovered at program start

SQL DATA BASE

- Easy access with freely available tools
- Suitable for large amounts of data

Assembly area

4Wire PPG generates and transfers order structures of customer and production modules as well as production documents to the production control system, for instance 4Wire PLS. For manual production areas, the production documents can be printed.

Generation of pre-assembly and assembly modules

- Connector and welding node modules
- Pre-assembly modules
- Assembly modules
- Final assembly modules

Work plan generation

For the different levels of production, such as cutting, pre-assembly and assembly, 4Wire PPG automatically generates detailed work plans for every work place with textual and graphical work instructions.

Calculation

4Wire PPG enables bid calculation based on customer modules, and production calculation based on production modules. For your specific method of calculation, 4Wire PPG standard calculation can be supplemented by your own scripts.

Manufacturing documents

4Wire PPG generates your manufacturing documents and reports. The generation is based on a flexible report engine. Therefore, the documents are highly adaptable to your needs.

Different production methods

4Wire PPG supports different production methods on wire harness level, e.g. wire-by-wire, module production, line production, single side production.

Production variants

4Wire PPG generates BOMs and work plans for different types of production. Each plant uses its preferred type and can optionally switch to a different version.

Assembly-suitable modules in KSK mode

4Wire PPG enables the formation of assembly-suitable modules in KSK-mode with components from multiple customer modules.

Wire harness with length variants

4Wire PPG considers length variants in the generation of new modules. So, high variation JIT/JIS processes can be implemented quickly and without compromises.

For over 10 years, 4Wire PPG shows this successfully in the commercial vehicle sector.

Plausibility checks for customer specific wire harnesses in the JIT/JIS process

4Wire PPG supports automated plausibility checks for each vehicle. This increases the speed and safety in the JIT / JIS process.

Reduce processing time

4Wire PPG provides unified, integrated, automated processes and integrates the engineering in the JIT / JIS process.

Throughput time in engineering will be significantly reduced and production documents in the JIT-controlled production process for customer-specific wire harnesses will be provided much faster.

Reduce expenses

4Wire PPG generates production plans automatically. Manual, highly specialized post-processing is drastically reduced. Significant reduction of time and effort in work preparation.

Improve quality

4Wire PPG generates uniform production plans. The typical errors caused by manual data entry, multiple entry and creation of workflow descriptions omitted. No more errors due to multiple data entry in manual process.

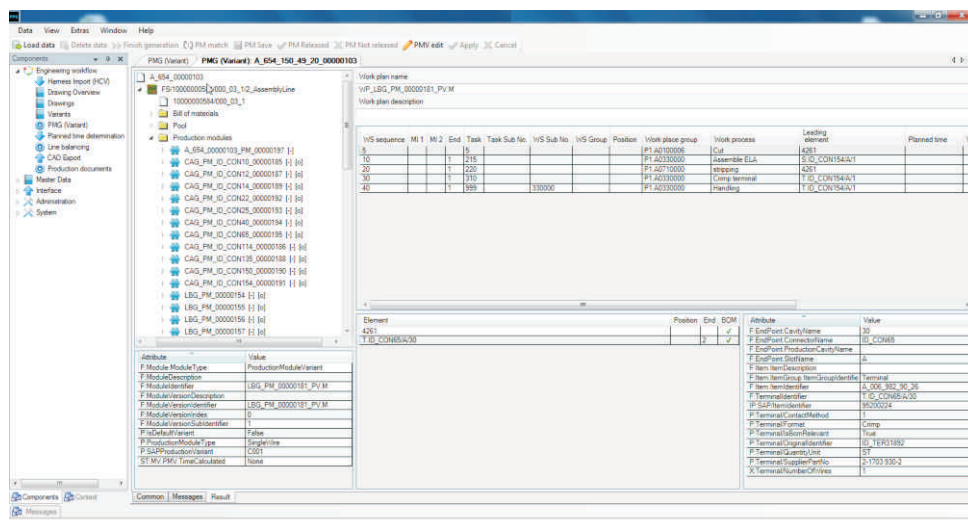
Increase safety

4Wire PPG generate production plans according to clear rules and performs extensive consistency checks in the JIT / JIS process.

Consistent data administration is the result of the integrated IT-based process chain.

Conclusion

With 4Wire PPG, different manufacturing concepts can be quickly, safely and flexibly implemented in a way optimized for production.



Picture 3: production module generation

4Wire PPG V4 EDITIONS

4Wire PPG 4 - CUTTING AREA

- The basic edition supports all functionalities of the cutting area for batch size wire harnesses

4Wire PPG 4 - ASSEMBLY AREA

- This edition extend the basic edition. It supports in addition all functionalities for the pre-assembly and final assembly

4Wire PPG 4 - KSK PRODUCTION

- This edition supports the KSK-specific wire harness production. It includes the cutting area and assembly area



Complementary Systems

4Wire CAO Cutting and Assembly Optimization

The software solution 4Wire CAO is the leading manufacturing execution system for the cutting area and assembly. It is the only system, that is used worldwide and supports all languages.

The system has interfaces to machines from Schleuniger, Artos, Komax, ShinMaywa, Schäfer, Yazaki and others, that are continuously updated in close cooperation with the machine manufacturers. That is why 4Wire CAO has the latest and the largest scope of functions that can be regarded as a de facto standard.

The software solution 4Wire CAO is flexible, scalable and efficient and already successfully installed by many successful companies. Due to its modularity, 4Wire CAO is also beneficial for small and medium-size companies.

4Wire CAO controls any cutting area between 2 to 200 machines and assembly. Its extension functions adapt flexible to the needs of companies. Optimization, machine and control interfaces are realized elegantly, reliably and cost-efficiently in 4Wire CAO.

4Wire PLS Production and Logistics Suite

4Wire PLS is a flexible solution specially made to support customer specific wire harness production (KSK).

Production processes are complex and different in every company contrary to commercial functions, especially in wire harness production with quantity one. Therefore, 4Wire PLS functionality depends on the project at hand. There are no unnecessary, missing or convoluted functions in 4Wire PLS.

Since 1990, DiIT develops software modules that are part of a standard package. The modules have been proven and tested hundreds of times and can be used in any combination. Customizations and new objects can be implemented reliably in very short time and with little effort.

Customer specific data structures are generated automatically with no extra effort. This software technology was funded by the European Commission and has been awarded with the highest award category "excellent".

Locations

Head Office Krailling/Munich

Justus-von-Liebig-Ring 11a
D-82152 Krailling near Munich
Phone +49 (0)89 - 89 32 50 - 0
Fax +49 (0)89 - 89 32 50 - 50
info@diit.de
www.diit.de

Branch Office Berlin

Am Borsigturm 33
D-13507 Berlin
Phone +49 (0)30 - 64 0996 - 37
Fax +49 (0)30 - 64 0996 - 36
berlin@diit.de

Branch Office Romania

Strada Mihai Eminescu Nr.35
RO-310085 Arad
Phone +40 357 411 500
info@diit.ro

Branch Office Mexico/USA

1370-B Pullman Drive, Suite A
TX-79936 El Paso
Phone +1 915 856 8868
Fax +1 915 856 7825

Branch Office China

108, BH Center
7755 Zhongchun Rd
Shanghai 201101
Phone +86 (21) 6252 6677
Fax +86 (21) 6240 8655